



12-Day Voyage!  
 Summer in Hokkaido & Korea

PACIFIC  
 WORLD

PEACE BOAT  
 2024 Summer

# Short Cruise

30 July, 2024 ~ 10 August, 2024

[Kobe (Japan) - Yokohama (Japan) / 12 days]



Enjoy 12 days of experiences  
and fun,  
unique to cruising!



## Jeju Island

This Korean island is famous for the World Heritage Site, Seongsan Ilchulbong or 'Sunrise Peak,' one of the best spots to admire the beautiful nature - not to mention the mouth-watering Korean food!



1. Seongsan Ilchulbong, a tuff cone formed by undersea eruptions  
2. Luscious landscape 3. Delicious Korean food

## Maizuru

Maizuru is a quaint town with historic buildings from the Meiji and early Showa periods. Notable sightseeing spots include Akarenga Park, Goro Sky Tower, and Amanohashidate.



1. Amanohashidate, one of Japan's three most scenic views  
2. Retro brick warehouses 3. Local delicacy, fish paste dishes

## Kanazawa

Once the base of a mighty clan in the Edo period, Kanazawa is a charming castle town filled with history and things to see, such as Kenrokuen, one of Japan's three most famous gardens, the 21st Century Museum of Contemporary Art, and the Higashi Chaya District.



1. Higashi Chaya District, Kanazawa's iconic entertainment quarter  
2. Traditional gold leaf craft 3. Seafood fresh from the sea



# \ Visit 5 ports in 12 days!! / Discover the Beauty of Summer in Hokkaido & Korea

Shorter but filled with all the fun of regular cruises  
In 2024 summer, Peace Boat will take you to Hokkaido and Jeju Island (South Korea) for breathtaking seasonal views and feasts of local delicacy.  
Join us and have the greatest cruise experience of your lifetime!

## Otaru

Otaru is a charming town with its canals, warehouses, and merchant buildings dating from the Meiji and early Showa periods, detailing its past as an important maritime gateway. Sapporo, the central city of Hokkaido, is easily accessible from here.



1. Such fresh seafood/urchin bowls can only be found in port towns like Otaru!  
2. Otaru Canal lined with historical warehouses and buildings  
3. Yoichi City, the birthplace of Nikka Whisky

## Hakodate

Hakodate is a famous port town with an old-school charm. It is full of memorable places like Goryokaku Tower, Kanemori Red Brick Warehouse, and the Old Public Hall of Hakodate Ward.



1. Admire the Michelin three-star view of Hakodate from Mt. Hakodate  
2. Kanemori Red Brick Warehouse, a must-see spot in Hakodate  
3. Try out dishes with the freshest ingredients in Hokkaido



## Peace Boat 2024 Summer Short Cruise 30 July, 2024 ~ 10 August, 2024, Kobe (Japan) - Yokohama (Japan) / 12 days

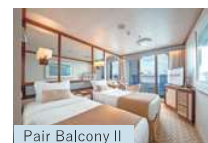
Date	Arrival	Departure	Port of Call	
7/30	Tue	PM	Kobe	Hyogo, Japan
8/1	Thu	AM	Jeju Island	Korea
8/3	Sat	Morning	Maizuru	Kyoto, Japan
8/4	Sun	Morning	Kanazawa	Ishikawa, Japan
8/5	Mon	Night		
8/7	Wed	Morning	Otaru	Hokkaido, Japan
8/8	Thu	AM	Hakodate	Hokkaido, Japan
8/10	Sat	AM	Yokohama	Kanagawa, Japan

0:00 ~ 4:00 ~ 6:00 ~ 8:00 ~ 12:00 ~ 18:00 ~ 23:00 ~  
Late arrival Early morning Morning AM PM Night Late night

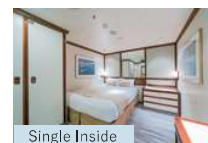
- A minimum of 1,000 passengers is required.
- Sailing overnight. ● Doctor and nurse are on board.
- Meals: Breakfast 11 times, Lunch 10 times, Dinner 11 times
- Vessel: Pacific World (Gross Tonnage: 77,441t/Length: 261.3m/ Operated by: Seahawk Corporation Limited Inc.)

# List of Cabins

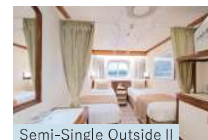
Cabin Class	Balcony/Window	Deck	Pair Type	Single Type	Semi-Single Type	
Owner's Suite	Balcony	9-10	A1	---	---	
Penthouse Suite		8	A2	---	---	
Premium Suite		9-10	A3	---	---	
Suite		8	A4	---	---	
Junior Suite		10	B	---	---	
Balcony I		10-12	C1	I	---	
Balcony II		9	C2	J	---	
Outside Plus I		Window	9-11	D1	---	---
Outside Plus II			8	D2	---	---
Outside I			8	E	K	E2
Outside II	5-6		F	L	F2	
Inside	---		8-12	G	M	G2



Pair Balcony II



Single Inside



Semi-Single Outside II

- All cabins are equipped with shower, toilet and refrigerator.
- You may be assigned to a cabin equipped with bunk beds. We do not accept requests regarding cabin preference on such issue.
- For passenger wishing to have a Suite class cabin for single usage, the charge will be 200% of the cruise fare.
- Suite class cabins are fully equipped with electronic bidet toilet seat.
- Semi-Single type cabin is a private compartment space created by dividing twin-type cabin with curtain.
- Room service is not available for shared rooms. The facilities of the Semi-Single type cabins such as shower, toilets, and lockers, etc. are shared among cabin mates.
- Children of 13 years old or younger at the time of departure are not eligible for room-sharing.

## Other Information

- The remaining validity of your passport must be at least 6 months after the date of your final disembarkation.
- Transportation costs from your home to the port of embarkation and from your port of disembarkation to your home are not included in the travel fee.
- The voyage schedule may be subject to change owing to circumstance such as weather and local conditions.
- The Captain and the Ship Company have the authority to change the itinerary and course of the ship if deemed necessary. Passenger safety is of paramount importance, therefore any unforeseen acts of providence, deterioration of political situations or orders from local authorities will be taken into account, and the itinerary or schedule may be changed due to these factors. Japan Grace Co., Ltd. will do its utmost to inform passengers as early as possible of any changes made. In the case of emergencies, passengers may be notified after changes have been made.
- Please kindly note that there will be no refunds made to passengers for changes made as a result of the above-mentioned circumstances.
- Some of the information and photos included in this brochure relates to the optional tours that you can enjoy during the voyage (not included in the cruise fare).
- The pictures in this brochure are meant to provide an image of the Peace Boat Cruise. This brochure includes pictures taken on a different passenger ship that was used in the past.

## Boarding with Children

**Under 13 years old (excluding middle school students):  
30% OFF off**

**Preschool children: Free**

- Applicable only when accompanied and sharing the same room and route with adults.
- Preschool children are required to sleep with their parent/guardian without a separate bed.
- One preschool child is free per accompanying adult, and additional travel charges will apply for each additional preschool child.
- Additional expenses (port charges, tips, international passenger taxes, visa fees, etc.) are required separately.

## Summary of Terms and Conditions

NOTE: The following is a translation / summary of the original Japanese document. If a conflict in meaning between this document and the original shall arise, the original shall prevail.

The following terms and conditions stipulate the business terms and the account of the transaction pursuant to Japanese travel agency law article 12, clause 4 and article 12, clause 5. The following represents part of the terms and conditions of the contractual writing of this Engagement.

### A) CONDITIONAL ENGAGEMENT TO PARTICIPATE IN A TRAVEL PROGRAM ON SALE TO THE GENERAL PUBLIC THROUGH PROMOTIONAL MEANS

The travel is coordinated by the Peace Boat office, and is planned and conducted by Japan Grace Co., Ltd. (hereinafter referred to as the 'Company') Those participating in this travel will be agreeing to a conditional engagement to participate in a travel program on sale to the general public through promotional means (hereinafter referred to as 'Travel Contract') with the Company.

### B) REGISTRATION FOR THE TRAVEL PROGRAM

Regarding your application, please refer to the Cruise Price List and the travel terms and conditions document issued by your travel agency.

### C) ITEMS INCLUDED IN THE TRAVEL FEE

1. Cost of voyage as indicated on the travel itinerary.
2. Accommodation onboard (in cabin type stipulated in invoice) and onboard events (except those requiring extra payment).
3. Cost of main meals onboard as stipulated in itinerary.
4. Hand luggage transportation fees by ship.
5. Costs for tour escorts, company staff and Peace Boat staff who will accompany participants during the voyage.

### D) ITEMS NOT INCLUDED IN THE TRAVEL FEE

Any items which are not mentioned in section Care not included in the travel fee. Please find below a list of examples of costs which are not covered by the travel fee.

1. Optional tour programs fee.
2. Any extra costs that may be incurred by a change in the class of cabin.
3. Costs incurred by procedures deemed necessary for overseas travel (administrative fees for procedures deemed necessary for overseas travel, vaccination fees, visa application fees).

4. Onboard tips for crew members. Additional tipping not required.
5. Port charges -berthing and facility use fees charged by port authorities in each port of call.
6. Travel insurance, telephone bills, bar bills or any other personal expenses incurred.
7. Excess baggage fee.
8. Transportation costs from your home to the port of embarkation and transportation costs from your port of disembarkation to your home, related accommodation fees and luggage transportation fees.
9. Fuel surcharge fee.
10. Visa fee. Visa requirements differ according to nationality. Participants are themselves responsible for obtaining all necessary visas prior to embarkation.
11. International Tourist Tax

### E) REPLACEMENT OF PARTICIPANTS

With the consent of Company and the completion of necessary items on designated form, as well as payment of JPY 11,000. (The final amount will be calculated with the rate at the time of replacement, and settled with the local currency.)

The Participant may assign their rights in the Travel Contract to another designated individual. The person to whom the Travel Contract has been assigned will inherit all rights and responsibilities related to the Travel Contract. However, the Company reserves the right to refuse the replacement of participants.

### F) CANCELLATION FEES

Cancellation of the travel contract by the customer. You are able to cancel the travel contract by paying the cancellation fee. Please check the travel terms and conditions of the travel agency where you applied for the cruise for information regarding the cancellation fee that applies to your cancellation. A travel contract cancellation will also result from a cruise change, class change, or section change.

### G) OTHERS

Those participating in a cruise are required to have overseas travel insurance. Matters that are not stipulated in the travel terms and conditions of this document are governed by the terms and conditions of the travel agency where you applied for the cruise or our company's travel stipulations "Standard Form Travel Agent Contact." Please refer to our company's website (www.pbcruise.com) for our company's stipulations.

The contents of this brochure are current as of October, 2023.

PLANNED AND CONDUCTED BY:



1-32-13 TAKADANOBABA,  
SHINJUKU-KU, TOKYO, 169-0075, JAPAN  
TEL: +81-3-5287-3081  
FAX: +81-3-5287-3083  
EMAIL: CUSTOMER@PBCRUISE.COM

COORDINATED BY:

**PEACE BOAT**

B1,3-13-1 TAKADANOBABA,  
SHINJUKU-KU, TOKYO, 169-0075, JAPAN  
TEL: +81-3-3363-7561  
FAX: +81-3-3363-7562

TRAVEL AGENT IN MALAYSIA



APPLE VACATIONS SDN BHD  
WISMA SUPLEN 2F, 42-2,  
JALAN SULTAN ISMAIL, 50250 KL  
TEL: 010-288 7540  
010-238 7540

2024S-A